

YUMCANG TRADING PTE. LTD.

洋仓贸易有限公司



中品洋仓  
**Yumcang**

# Contents

	Page
<b>1. Company Profile</b> -----	<b>1</b>
<b>2. Design Illustrations</b> -----	<b>2</b>
<b>3. Product Information</b> -----	<b>3</b>
<b>4. Product Samples</b> -----	<b>12</b>
<b>5. Product Specifications</b> -----	<b>14</b>
<b>6. Product Showcases</b> -----	<b>18</b>
<b>7. Warehouse and Inventory</b> -----	<b>19</b>
<b>8. Certification, Testing and Standards</b> -----	<b>22</b>

## **1. Company Profile**

Yumcang Trading Pte. Ltd. aims to supply to the construction industry in Singapore for high quality and fair priced comprehensive bracket support system. The company mainly offers Unistrut bracket system and accessories to provide for the design flexibility and special requirements for any form of situations.

Despite the increasing market competitiveness with other major suppliers, Yumcang Trading strives to fulfil our customer's satisfactions with good quality, low cost and efficiency, satisfactory and thoughtful services and supports. In addition, our products are commonly used and conform to required standards tested by an accredited third-party testing organization approved by the local Authorities.

Company UEN : 202328483Z

GST Reg No : 202328483Z

Office Address : 147 Woodlands Industrial Park E5, Woodlands E-Terrace, S(757510)

Retail Address : 10 Admiralty Street #01-27 North Link Building, S(757695)

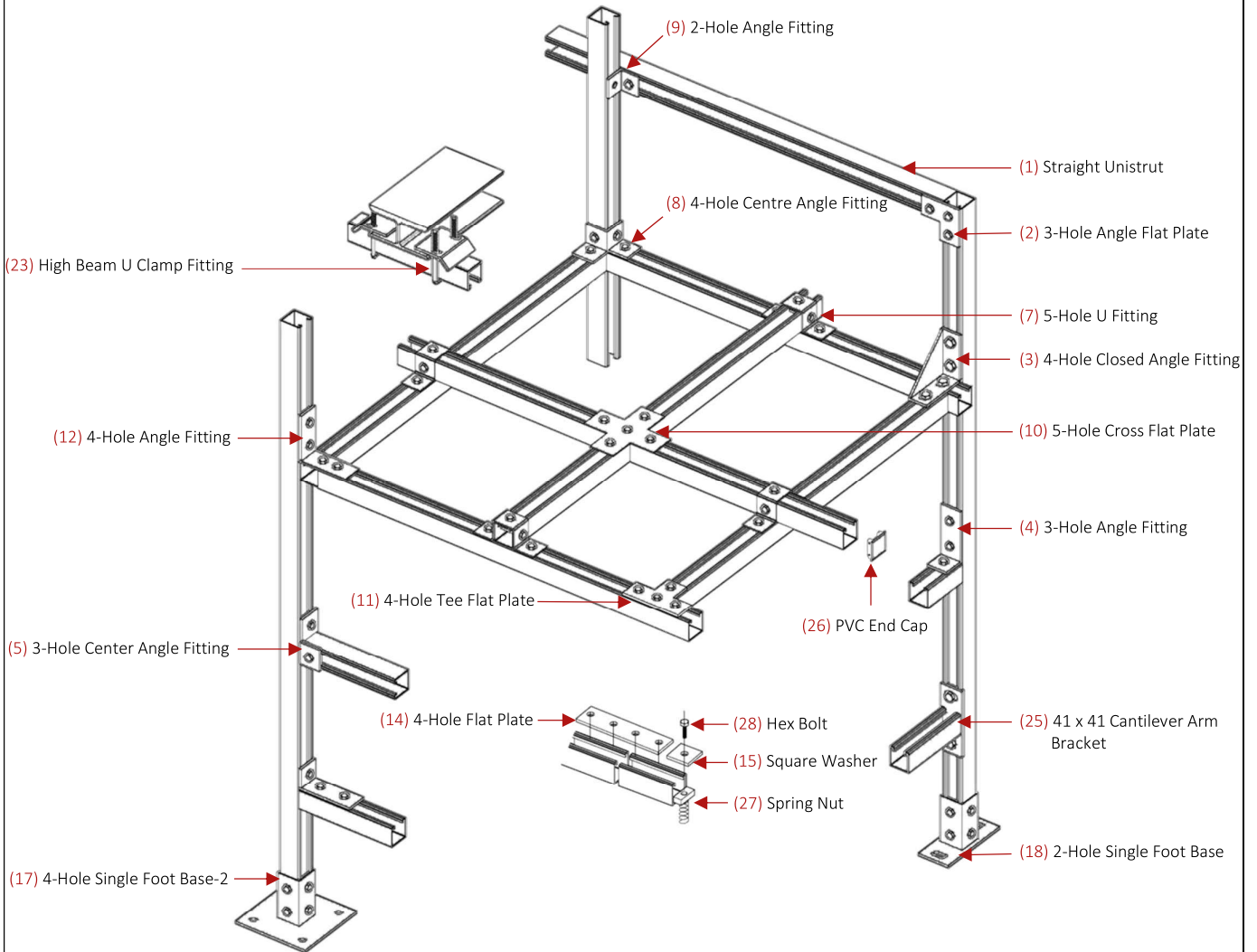
Call Us : (+65) 6219 5880

Email Us : [enquiry@yumcang.com.sg](mailto:enquiry@yumcang.com.sg)

Find Us : [yumcang.com.sg](http://yumcang.com.sg)



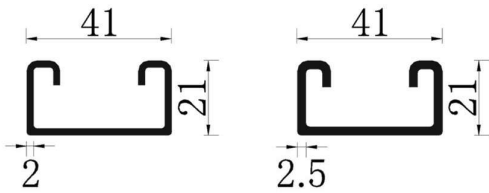
## 2. Design Illustrations



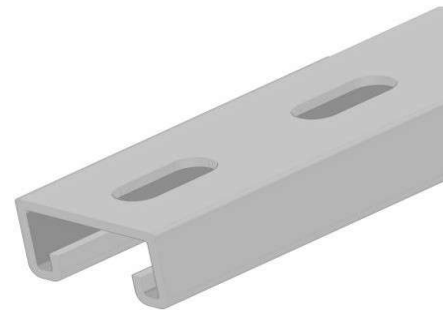
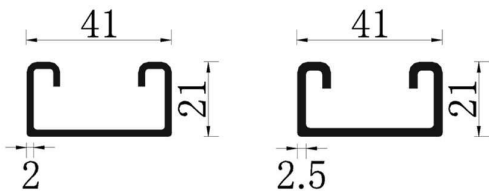
### 3. Product Information

#### 1. Unistrut

- 1.1 41 x 21 x 2.0mm HDG Straight Unistrut
- 41 x 21 x 2.5mm HDG Straight Unistrut
- (UNL03-20 / UNL03-25)

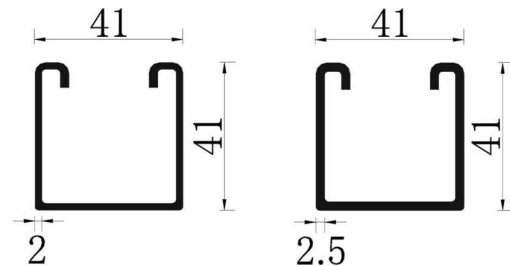
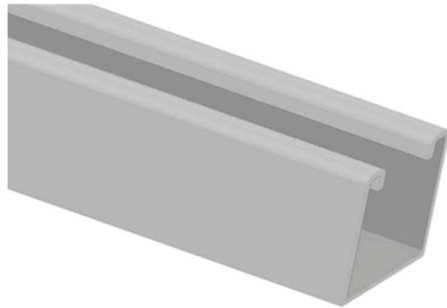


- 1.2 41 x 21 x 2.0mm HDG Slotted Unistrut
- 41 x 21 x 2.5mm HDG Slotted Unistrut
- (USL03-20 / USL03-25)

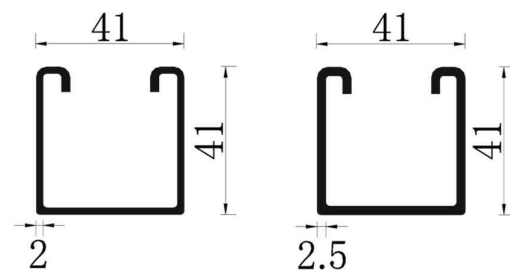
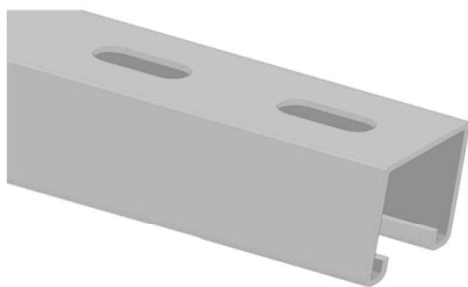


### 3. Product Information

- 1.3 41 x 41 x 2.0mm HDG Straight Unistrut
- 41 x 41 x 2.5mm HDG Straight Unistrut  
(UNL02-20 / UNL02-25)

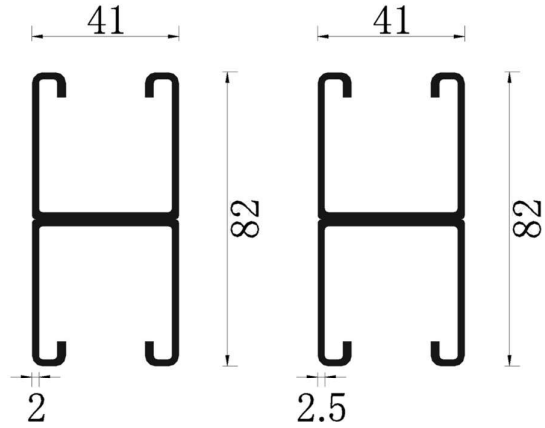
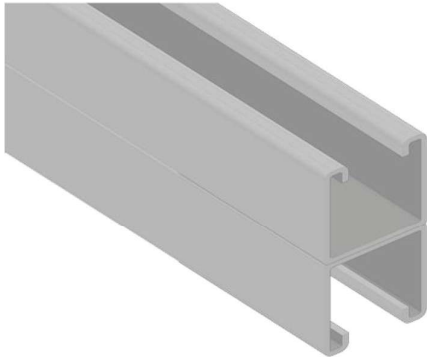


- 1.4 41 x 41 x 2.0mm HDG Slotted Unistrut
- 41 x 41 x 2.5mm HDG Slotted Unistrut  
(USL02-20 / USL02-25)

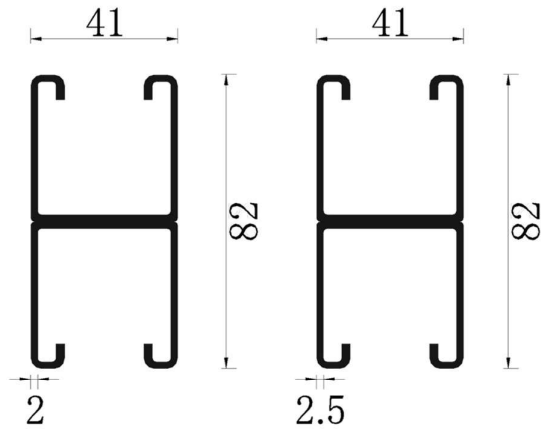
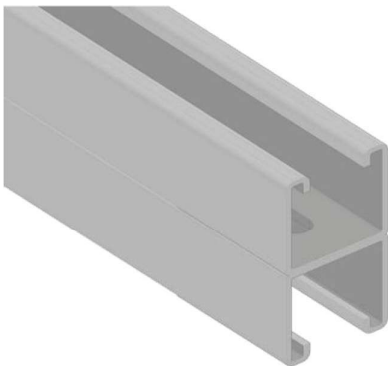


### 3. Product Information

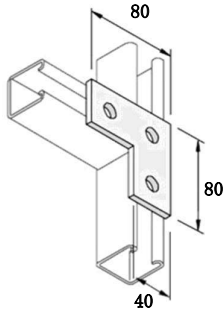
- 1.5 82 x 41 x 2.0mm HDG Straight Unistrut
- 82 x 41 x 2.5mm HDG Straight Unistrut
- (UNL01-20 / UNL01-25)



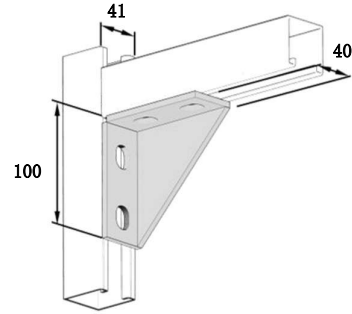
- 1.6 82 x 41 x 2.0mm HDG Slotted Unistrut
- 82 x 41 x 2.5mm HDG Slotted Unistrut
- (USL01-20 / USL01-25)



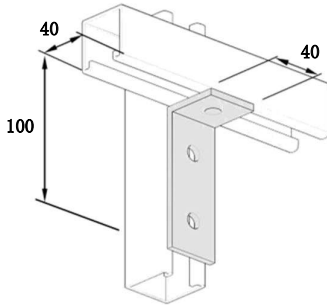
3. Product Information



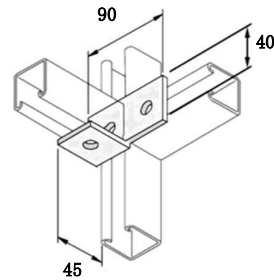
2. 3-Hole Angle Flat Plate  
(AAFP3-N / AAFP3-H)



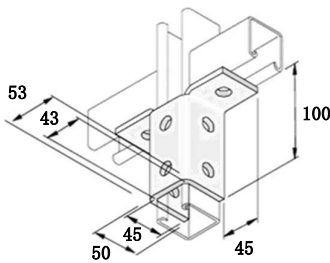
3. 4-Hole Closed Angle Fitting  
(ACAF4-N / ACAF4-H)



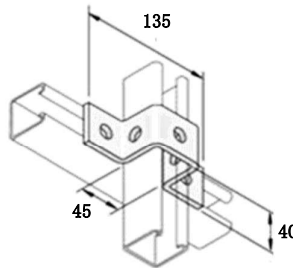
4. 3-Hole Angle Fitting  
(AAF3-N / AAF3-H)



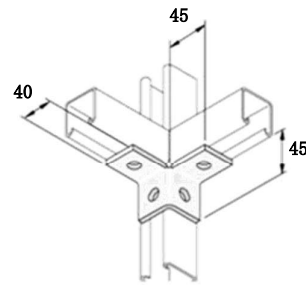
5. 3-Hole Centre Angle Fitting  
(ACAF3-N / ACAF3-H)



6. 8-Hole Wing Support  
(AWS8-N / AWS8-H)

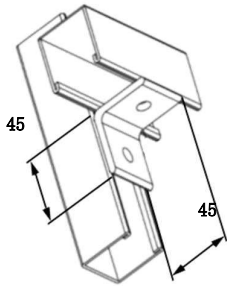


7. 5-Hole U Fitting  
(AUF5-N / AUF5-H)

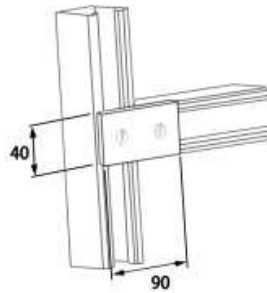


8. 4-Hole Centre Angle Fitting  
(ACAF4-N / ACAF4-H)

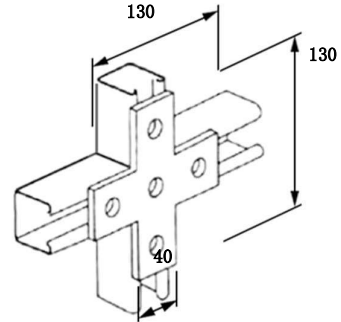
3. Product Information



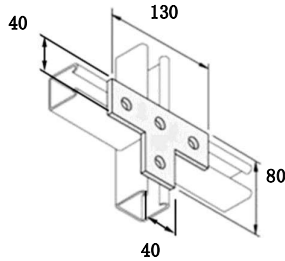
9. 2-Hole Angle Fitting  
(AAF2-N / AAF2-H)



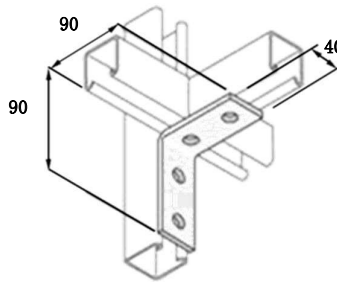
10. 2-Hole Flat Plate  
(AFP2-N / AFP2-H)



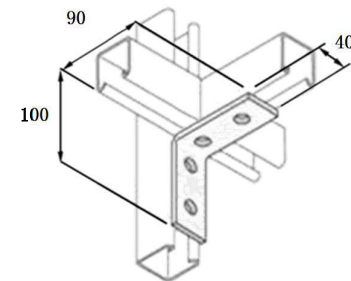
11. 5-Hole Cross Flat Plate  
(ACFP5-N / ACFP5-H)



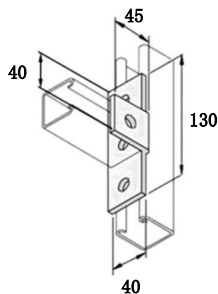
12. 4-Hole Tee Flat Plate  
(ATFP4-N / ATFP4-H)



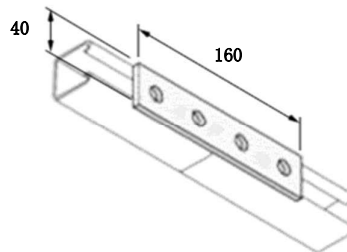
13. 4-Hole Angle Fitting  
(AAF4-N / AAF4-H)



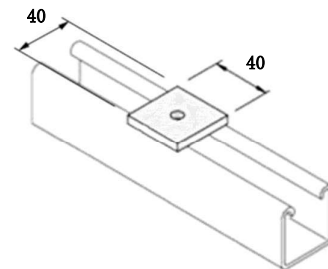
13-1. 4-Hole Angle Fitting  
(AAF4-N-1 / AAF4-H-1)



14. 4-Hole Straight Plate Angle Fitting  
(ASPAF4-N / ASPAF4-H)

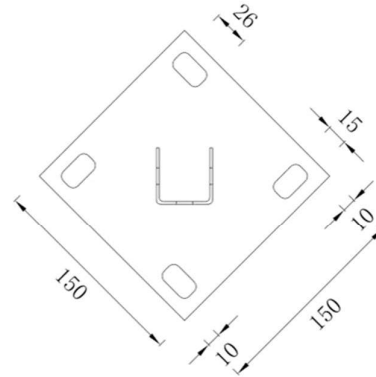
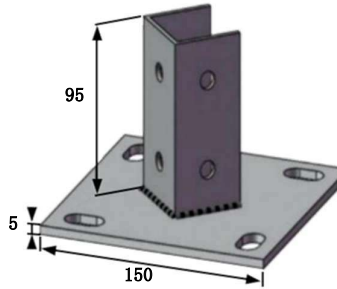


15. 4-Hole Flat Plate  
(AFP4-N / AFP4-H)

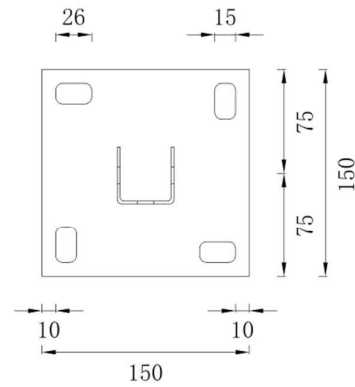
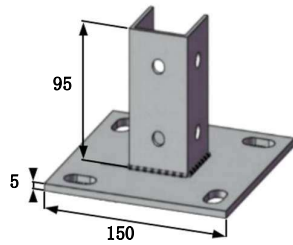


16. Square Washer (M10, M12)  
(ASQW10-N / ASQW10-H)  
(ASQW12-N / ASQW12-H)

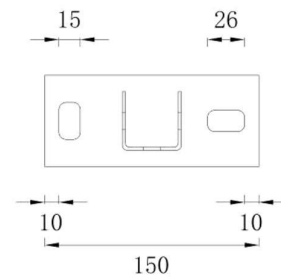
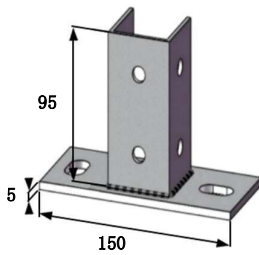
3. Product Information



17. 4-Hole Single Foot Base-1  
(AFBL02-H-1)

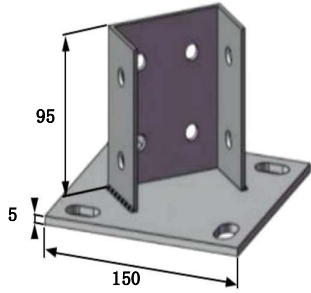


18. 4-Hole Single Foot Base-2  
(AFBL02-H-2)

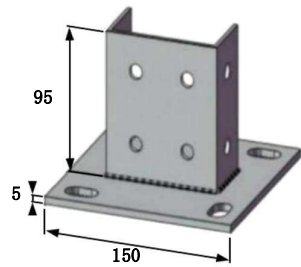
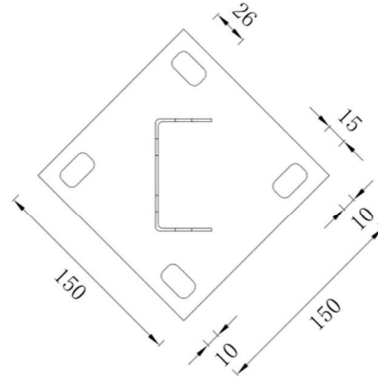


19. 2-Hole Single Foot Base  
(AFBS02-H)

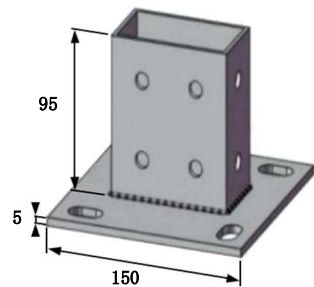
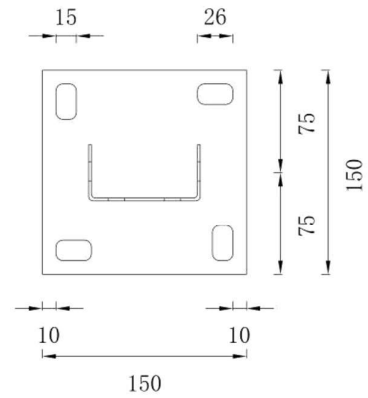
3. Product Information



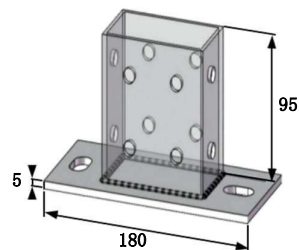
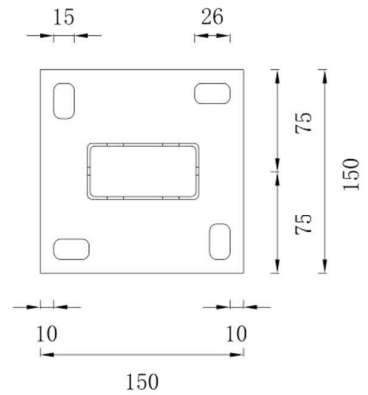
20. 4-Hole Double Foot Base-1  
(AFBL01-H-1)



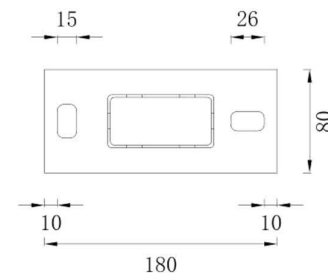
21. 4-Hole Double Foot Base-2  
(AFBL01-H-2)



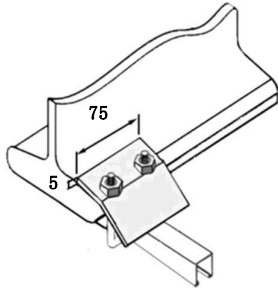
22. 4-Hole Double Foot Base-3  
(AFBL01-H-3)



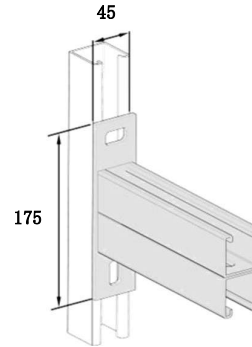
23. 2-Hole Double Foot Base  
(AFBS01-H)



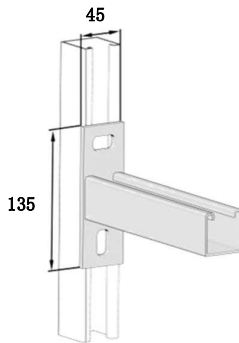
3. Product Information



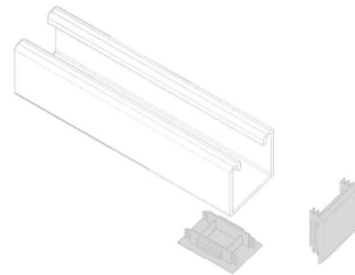
24. High Beam U Clamp Fitting  
(AHUC01-H / AHUC02-H)



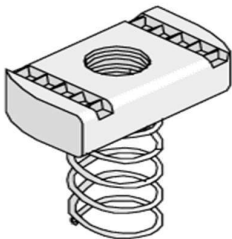
25. 82 X 41 Cantilever Arm Bracket  
(ACAB01)



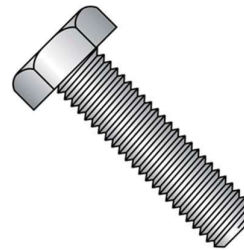
26. 41 X 41 Cantilever Arm Bracket  
(ACAB02)



27. PVC End Cap (41 x 41mm, 41 x 21mm)  
(APVC01 / APVC02)



28. Spring Nut (M6, M8, M10, M12)  
(ASPN06-N / ASPN06-H)  
(ASPN08-N / ASPN08-H)  
(ASPN10-N / ASPN10-H)  
(ASPN12-N / ASPN12-H)

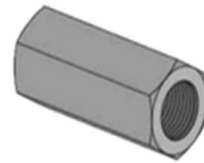


29. Hex Bolt (M6, M8, M10, M12)  
(AHB06-N / AHB06-H)  
(AHB08-N / AHB08-H)  
(AHB10-N / AHB10-H)  
(AHB12-N / AHB12-H)

### 3. Product Information



30. Threaded Rod (M10, M12)  
(ATR10-2-N / ATR10-2-H)  
(ATR12-2-N / ATR12-2-H)  
(ATR10-3-N / ATR10-3-H)  
(ATR12-3-N / ATR12-3-H)



31. Rod Coupler (M10, M12)  
(ARC10-N / ARC10-H)  
(ARC12-N / ARC12-H)



32. Flat Washer (M6, M8, M10, M12)  
(AFW06-N / AFW06-H)  
(AFW08-N / AFW08-H)  
(AFW10-N / AFW10-H)  
(AFW12-N / AFW12-H)



33. Spring Washer (M6, M8, M10, M12)  
(ASPW06-N / ASPW06-H)  
(ASPW08-N / ASPW08-H)  
(ASPW10-N / ASPW10-H)  
(ASPW12-N / ASPW12-H)



34. Hex Nut (M6, M8, M10, M12)  
(AHN06-N / AHN06-H)  
(AHN08-N / AHN08-H)  
(AHN10-N / AHN10-H)  
(AHN12-N / AHN12-H)



35. Wedge Nut (M8, M10, M12)  
(AWN08-N / AWN08-H)  
(AWN10-N / AWN10-H)  
(AWN12-N / AWN12-H)



36. Beam Clamp (M10, M12)  
(ABC10-N / ABC12-N)

**4. Product Samples**



2-Hole Angle Fitting



4-Hole Angle Fitting



3-Hole Angle Fitting



4-Hole Double Foot Base-2



Spring Nut (M6, M8, M10, M12)



5-Hole U Fitting



5-Hole Cross Flat Plate



4-Hole Tee Flat Plate



Square Washer (M10, M12)

4. Product Samples



41 x 21 HDG Straight Unistrut



41 x 21 HDG Slotted Unistrut



41 x 41 HDG Straight Unistrut



41 x 41 HDG Slotted Unistrut

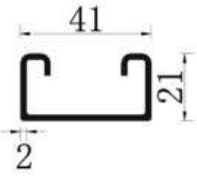


82 x 41 HDG Straight Unistrut



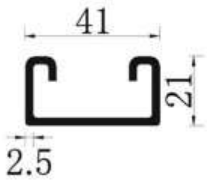
82 x 41 HDG Slotted Unistrut

### 5. Product Specifications



41 x 21 x 2.0  
(UNL03-20 / USL03-20)

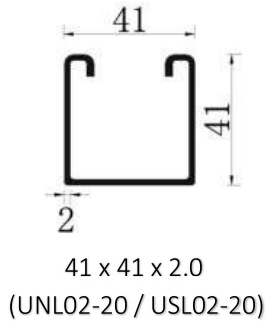
Span/Effective Length (mm)	Uniformly Distributed Load		Point Load		Applied Axial Load (kN)
	Load (kN)	Deflection (mm)	Load (kN)	Deflection (mm)	
500	2.49	2.01	1.24	1.61	-
1000	1.24	8.07	0.62	6.46	-
1500	0.82	18.17	0.41	14.54	-
2000	0.62	32.3	0.31	25.84	-



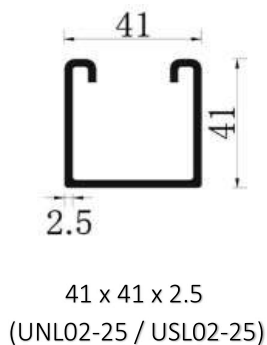
41 x 21 x 2.5  
(UNL03-25 / USL03-25)

Span/Effective Length (mm)	Uniformly Distributed Load		Point Load		Applied Axial Load (kN)
	Load (kN)	Deflection (mm)	Load (kN)	Deflection (mm)	
500	2.71	1.81	1.35	1.45	9.76
1000	1.35	7.24	0.67	5.79	6.77
1500	0.9	16.3	0.45	13.04	4.28
2000	0.67	28.99	0.34	23.19	3.44

5. Product Specifications

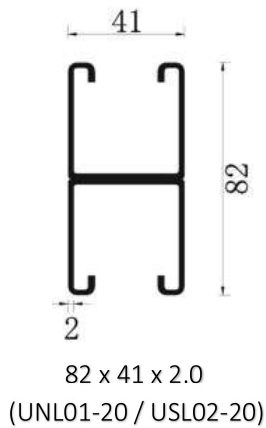


Span/Effective Length (mm)	Uniformly Distributed Load		Point Load		Applied Axial Load (kN)
	Load (kN)	Deflection (mm)	Load (kN)	Deflection (mm)	
500	7.13	0.96	3.56	0.77	12.89
1000	3.56	3.83	1.78	3.06	11.44
1500	2.37	8.61	1.18	6.86	9.39
2000	1.78	15.32	0.89	12.26	6.74
2500	1.42	23.88	0.71	19.1	4.5
3000	1.18	34.3	0.59	27.43	-

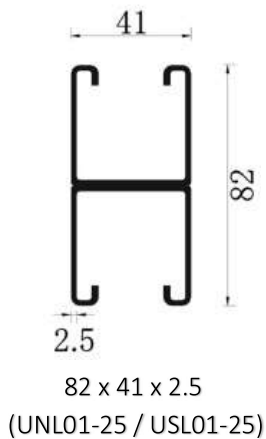


Span/Effective Length (mm)	Uniformly Distributed Load		Point Load		Applied Axial Load (kN)
	Load (kN)	Deflection (mm)	Load (kN)	Deflection (mm)	
500	8.03	1.05	4.02	0.84	16.04
1000	4.01	4.18	2	3.34	13.63
1500	2.68	9.41	1.34	7.53	10.42
2000	2	16.73	1	13.38	8.27
2500	1.6	26.15	0.8	2.092	6.78
3000	1.43	39.25	0.7	32.1	-

### 5. Product Specifications

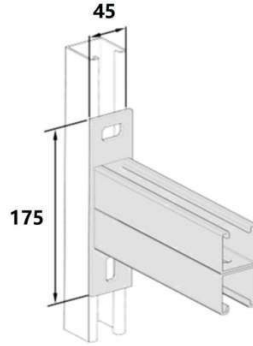


Span/Effective Length (mm)	Uniformly Distributed Load		Point Load		Applied Axial Load (kN)
	Load (kN)	Deflection (mm)	Load (kN)	Deflection (mm)	
500	14.13	0.84	7.06	0.75	26.9
1000	7.04	3.52	3.52	3.03	11.44
1500	4.21	8.54	2.1	7.01	10.62
2000	3.22	13.98	1.66	11.85	7.02
2500	2.68	22.69	1.34	18.9	9.2
3000	2.11	35.98	1.05	26.23	-



Span/Effective Length (mm)	Uniformly Distributed Load		Point Load		Applied Axial Load (kN)
	Load (kN)	Deflection (mm)	Load (kN)	Deflection (mm)	
500	22.88	0.57	13.44	0.46	35.11
1000	12.27	2.15	6.14	1.72	26.58
1500	8.18	4.84	4.09	3.87	25.58
2000	6.13	8.61	3.06	6.89	21.04
2500	4.5	13.5	2.45	10.78	17.45
3000	4.02	20.2	2.02	14.84	-

## 5. Product Specifications



82 x 41 Cantilever Arm Bracket  
(ACAB01)

Span/Effective Length (m)	Uniformly Distributed Load (kN)	Point Load at end (kN)
0.25	5.5	0.82
0.5	1.52	0.39
0.75	0.21	0.07



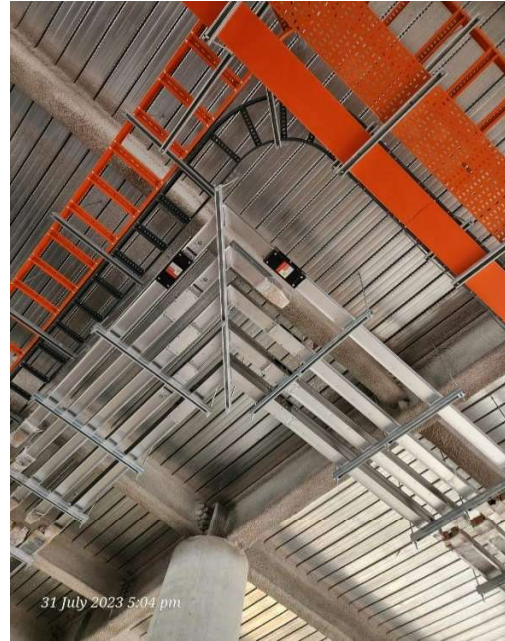
41 x 41 Cantilever Arm Bracket  
(ACAB02)

Span/Effective Length (m)	Uniformly Distributed Load (kN)	Point Load at end (kN)
0.25	2.25	0.35
0.5	0.62	0.16
0.75	0.27	0.09

## 6. Product Showcases



Project Code : ICA  
Location : Kallang Way



Project Code : ICA  
Location : Kallang Way

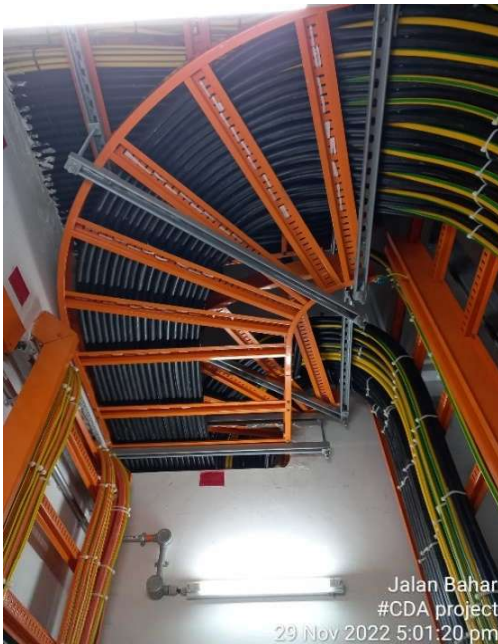


Project Code : SNF  
Location : Tuas



Project Code : SNF  
Location : Tuas

## 6. Product Showcases



Jalan Bahar  
#CDA project  
29 Nov 2022 5:01:20 pm

Project Code : CDA  
Location : Lim Chu Kang



Jalan Bahar  
#CDA project  
29 Nov 2022 3:49:01 pm

Project Code : CDA  
Location : Lim Chu Kang

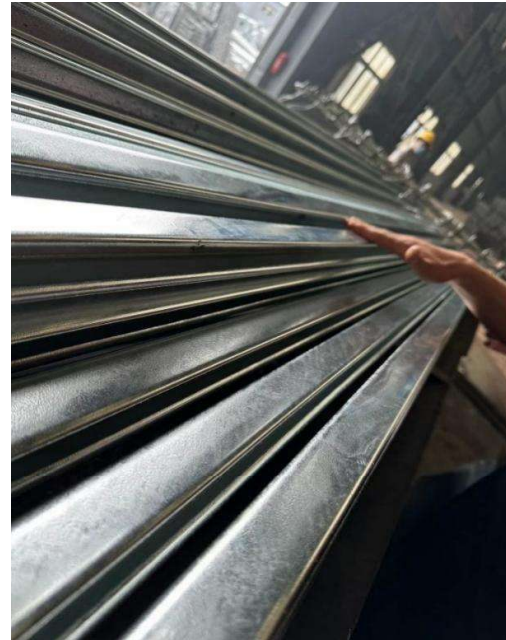


Project : SIT  
Location : Punggol



Project : SIT  
Location : Punggol

## 7. Warehouse and Inventory



### 7. Warehouse and Inventory



### 8. Certification, Testing and Standards

Yumcang’s products are commonly used and conform to required standards tested by an accredited third-party testing organization approved by the local Authorities

The image displays four TUV SUD test reports for Yumcang products, arranged in a 2x2 grid. Each report is for Test Report No. 7191315811-MEC2302-LJY, dated 18 AUG 2023. The reports include the following sections:

- Test Report No. 7191315811-MEC2301-LJY (dated 18 AUG 2023):**
  - SUBJECT:** Loads Testing for Long Spring Nail
  - TESTED FOR:** Yumcang Trading Pte Ltd, 147 Woodlands Industrial Estate, Singapore 737510.
  - DESCRIPTION OF SAMPLE:** Table with columns: Sample Description, Nominal Dimension, Material.
  - TEST METHOD:** BS 6040 - 1989 - Metal channel cable support systems for electrical installations.
  - DATE OF TEST:** 18 Aug 2023
- Test Report No. 7191315811-MEC2302-LJY (dated 18 AUG 2023):**
  - SUBJECT:** Load Testing for Long Spring Nail
  - TESTED FOR:** Yumcang Trading Pte Ltd, 147 Woodlands Industrial Estate, Singapore 737510.
  - DESCRIPTION OF SAMPLE:** Table with columns: Sample Description, Nominal Dimension, Material.
  - TEST METHOD:** BS 6040 - 1989 - Metal channel cable support systems for electrical installations.
  - DATE OF TEST:** 18 Aug 2023
- Test Report No. 7191315811-MEC2301-LJY (dated 18 AUG 2023):**
  - APPENDIX:** Photos 1-5 showing sample received, test setup (clip test), and tested samples (pull-out test).
- Test Report No. 7191315811-MEC2302-LJY (dated 18 AUG 2023):**
  - APPENDIX:** Photos 1-5 showing sample received, test setup (pull-out test), and tested samples (clip test).

8. Certification, Testing and Standards



